

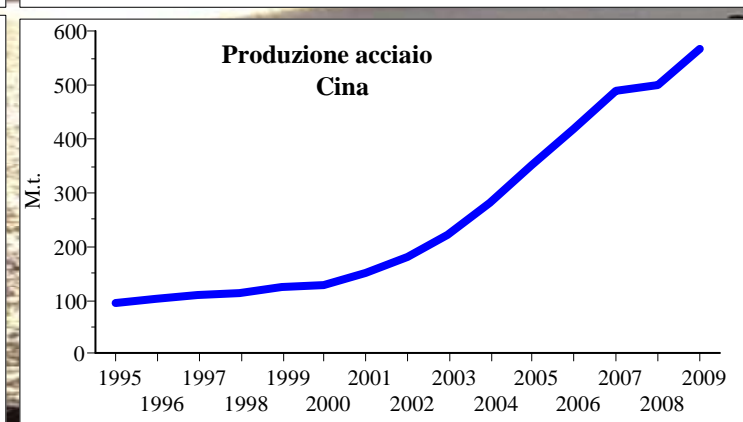
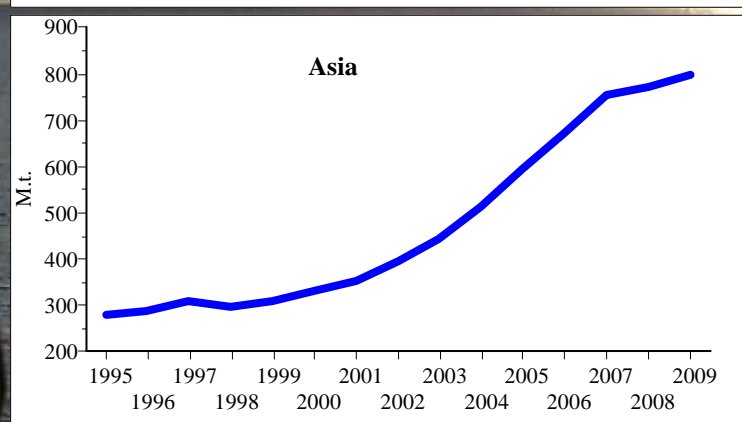
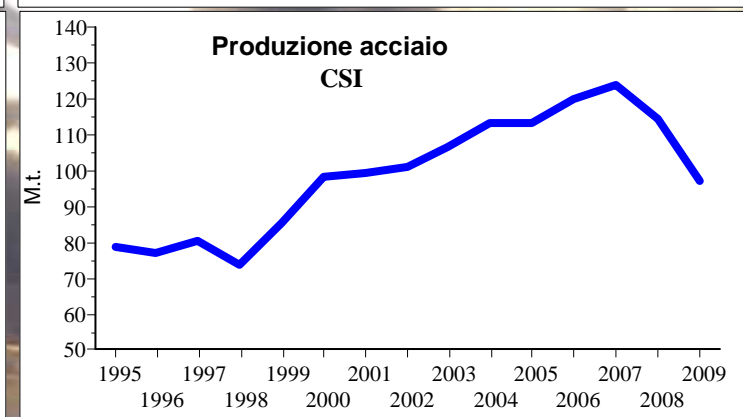
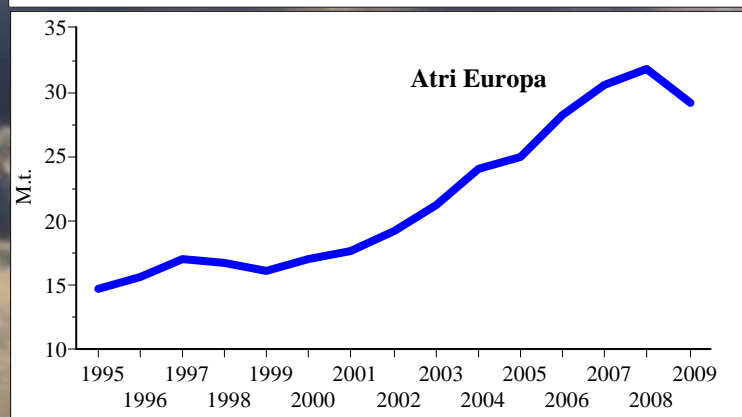
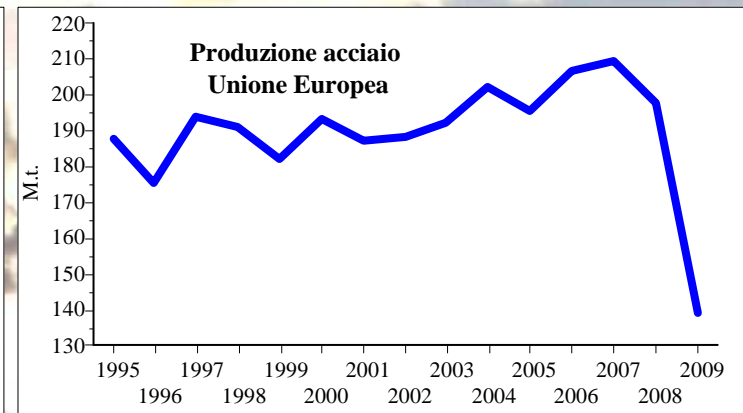
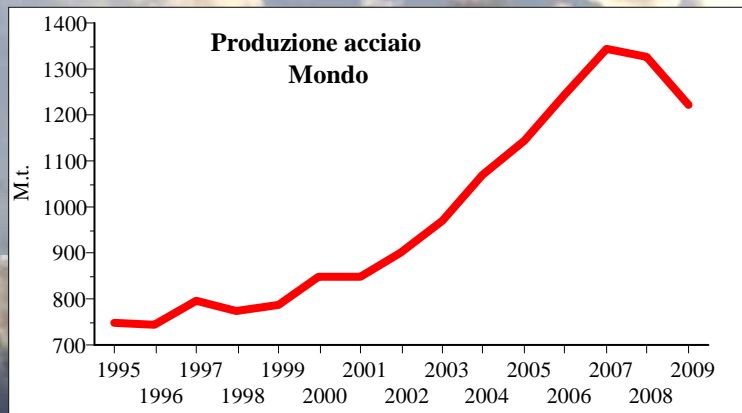
Osservatorio Congiunturale

# Siderurgia

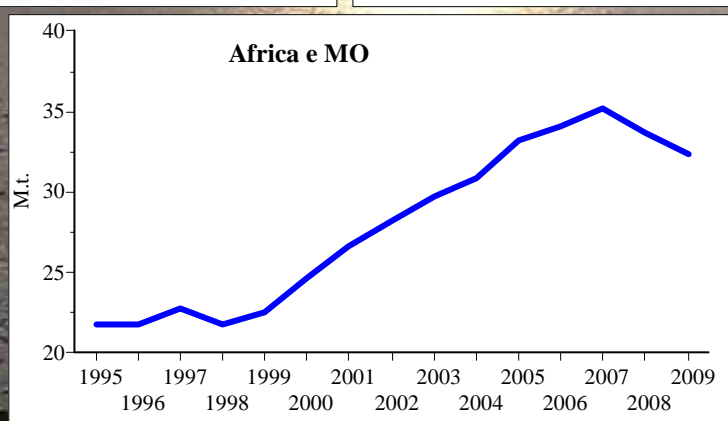
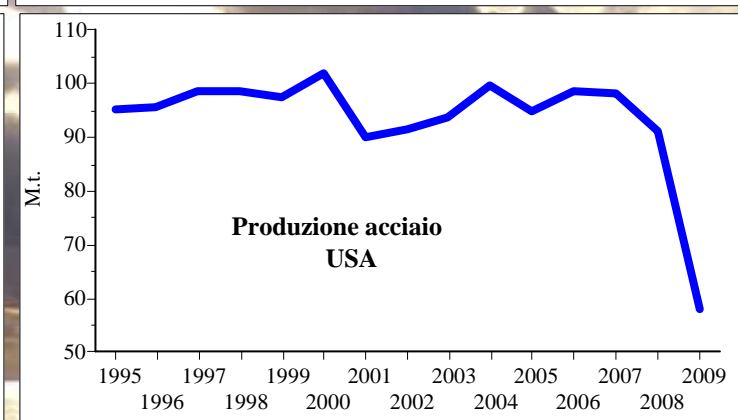
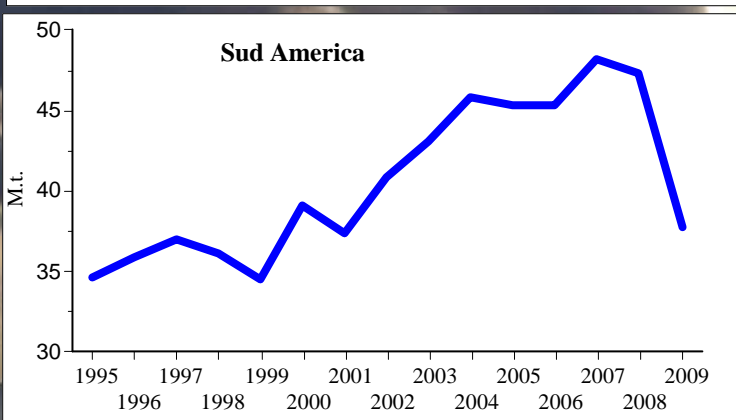
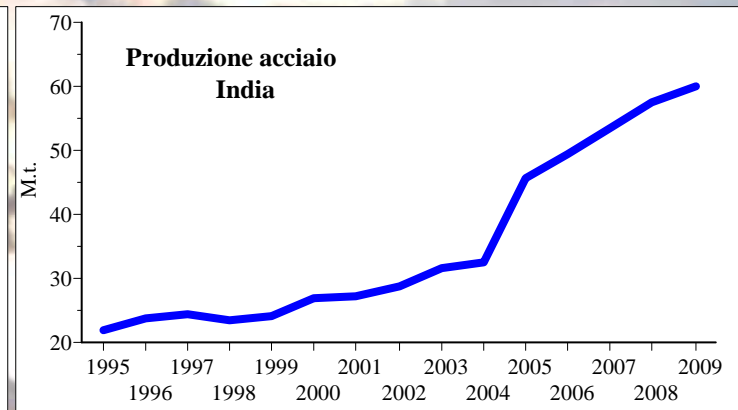
Milano  
marzo 2010

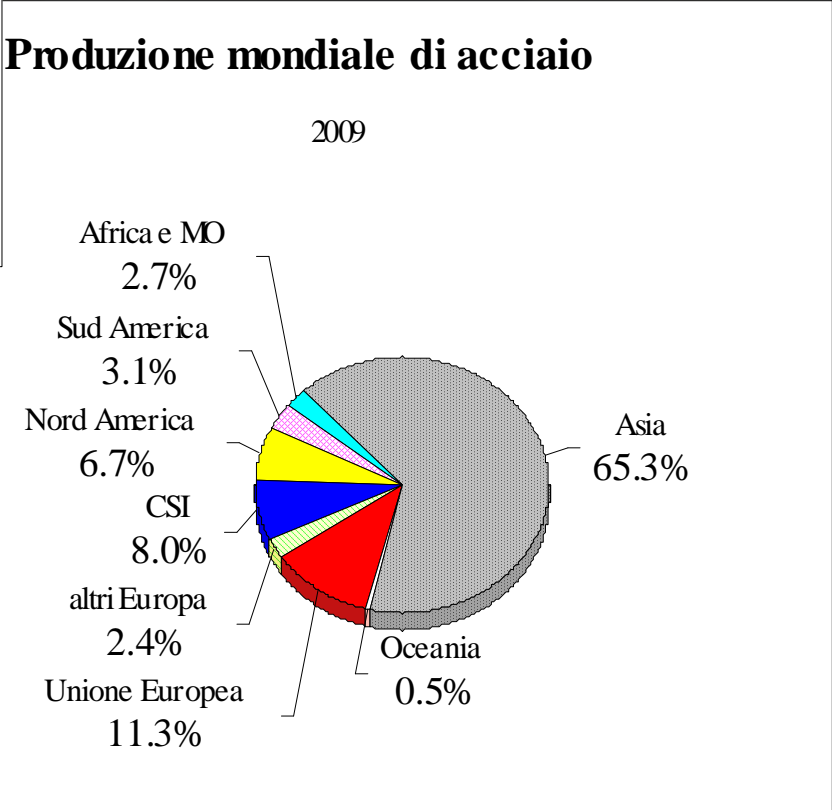
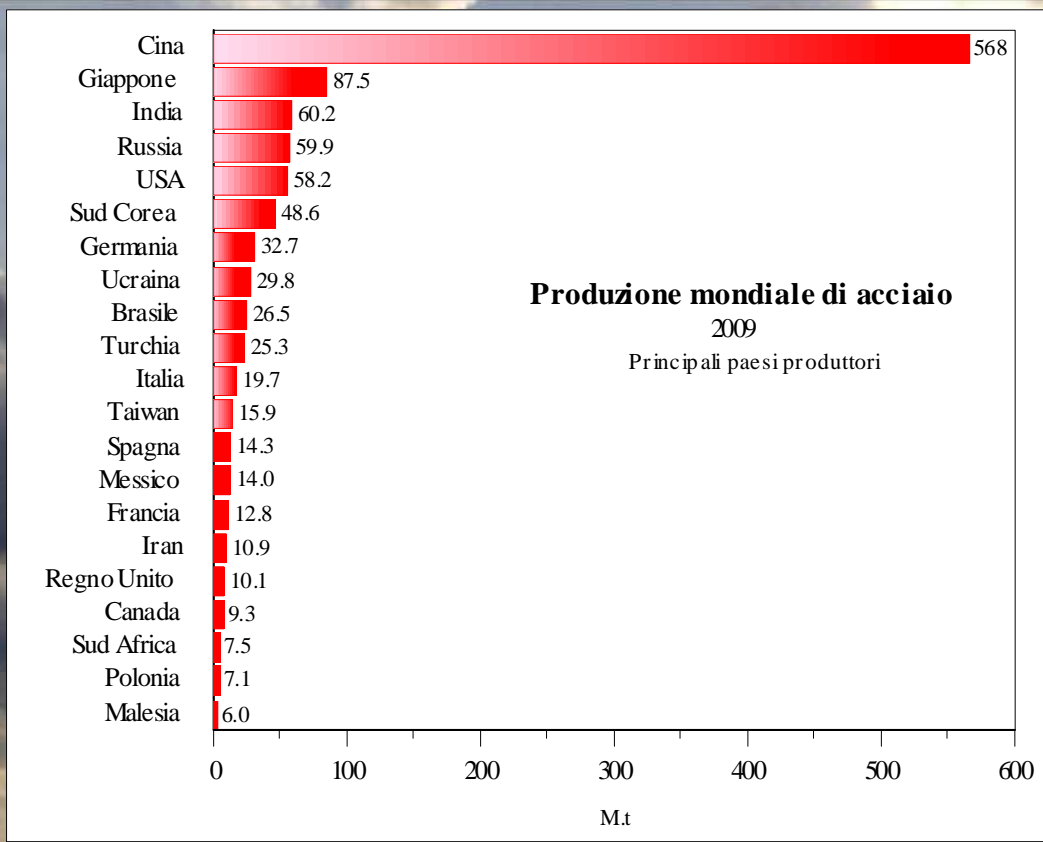


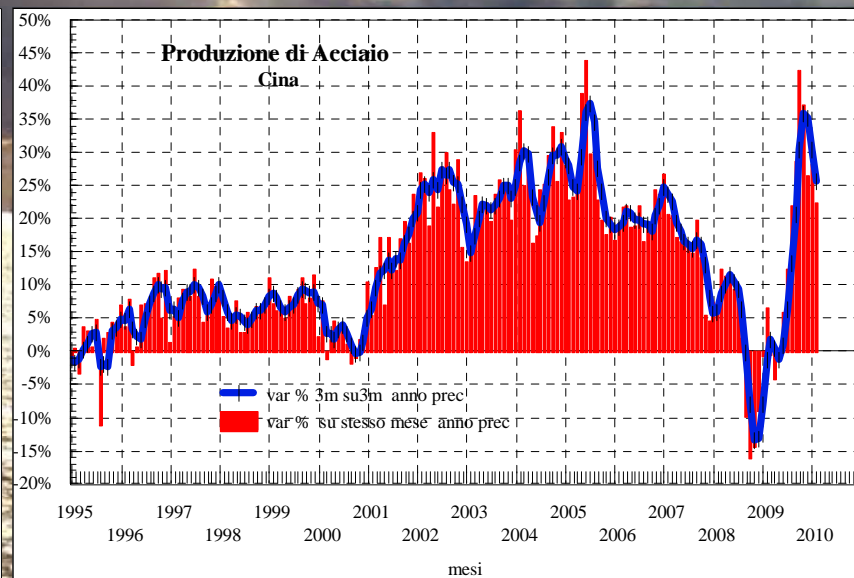
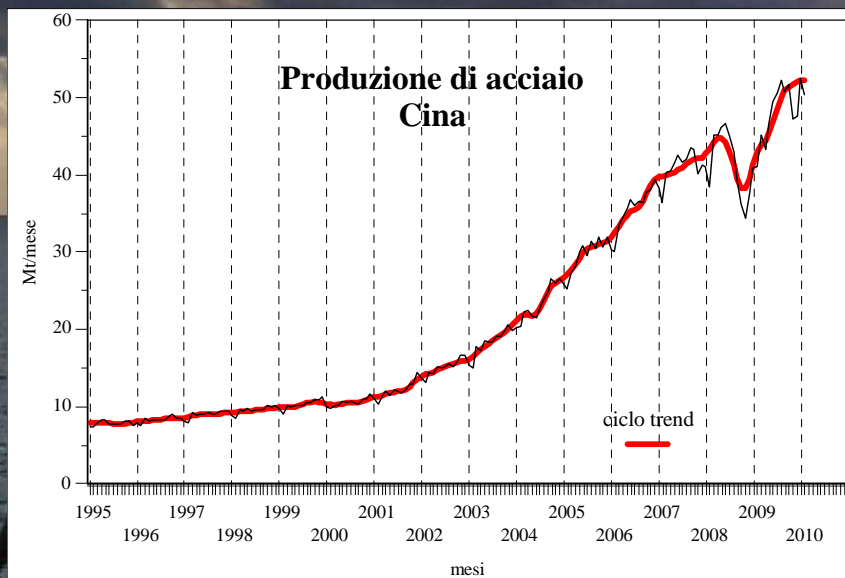
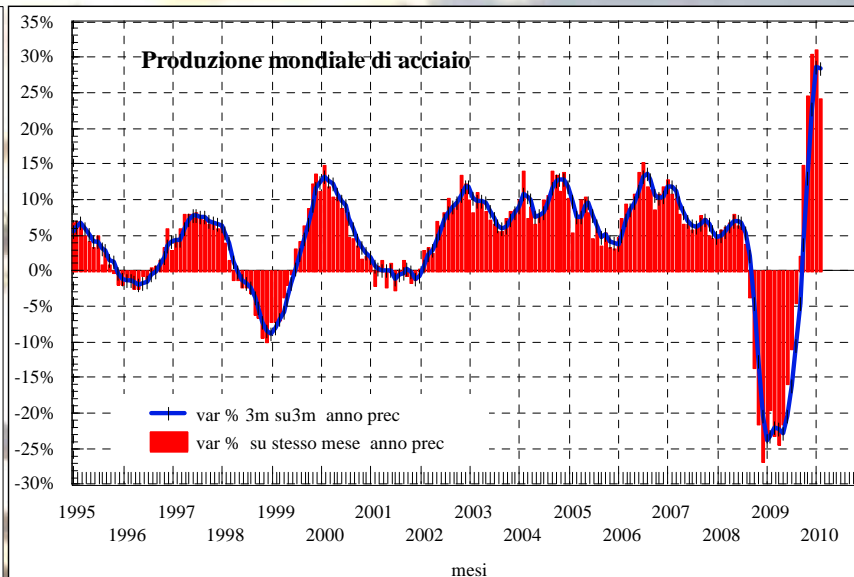
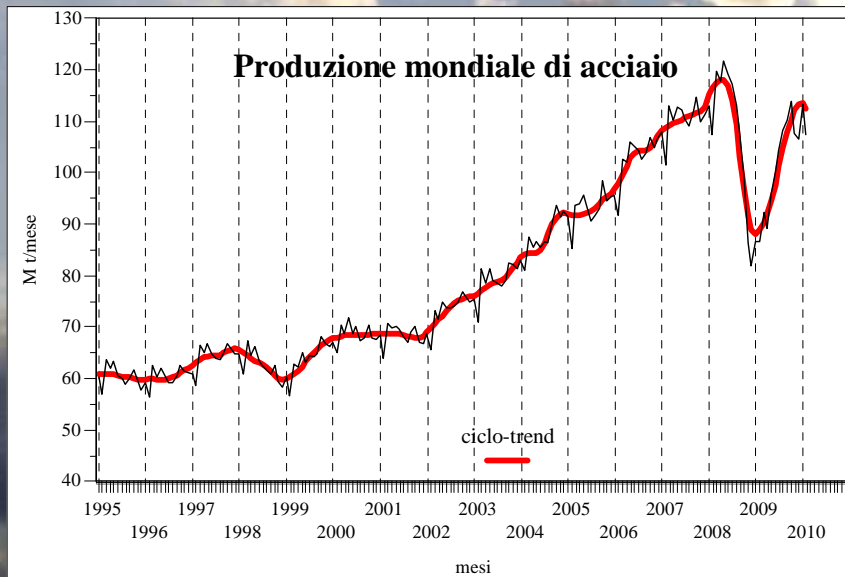
Federacciai

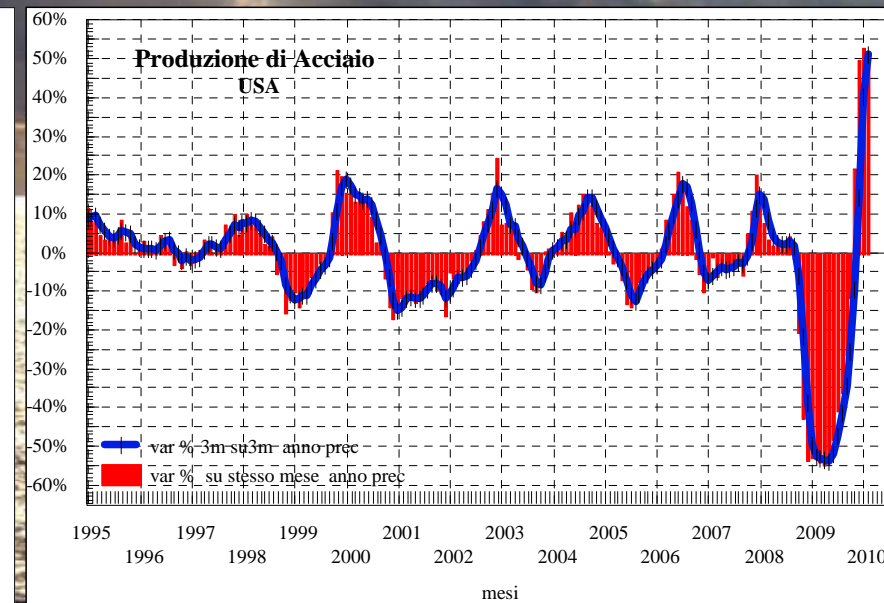
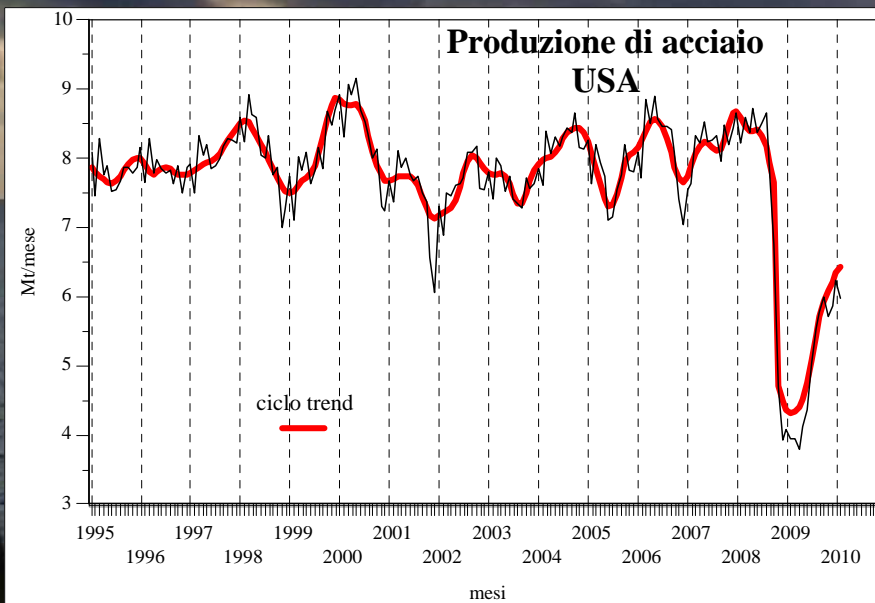
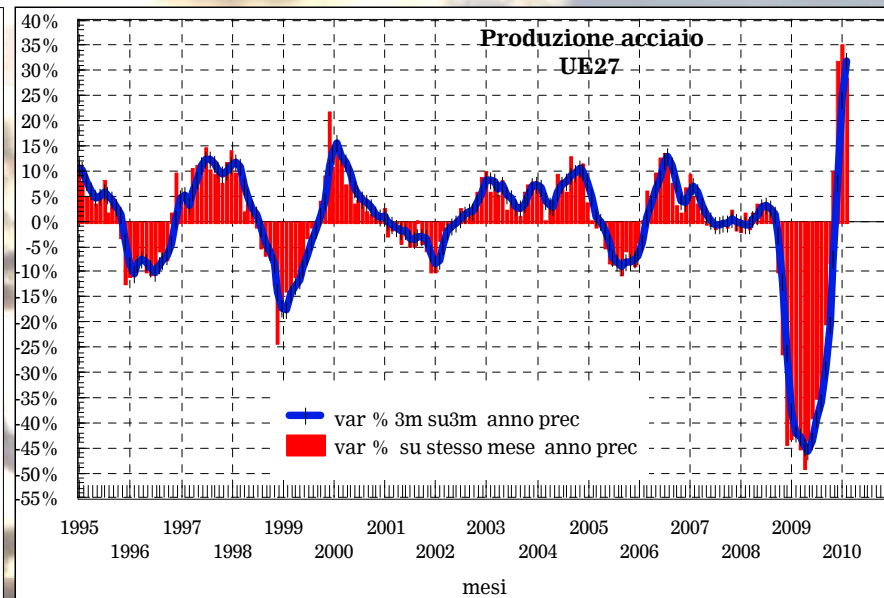
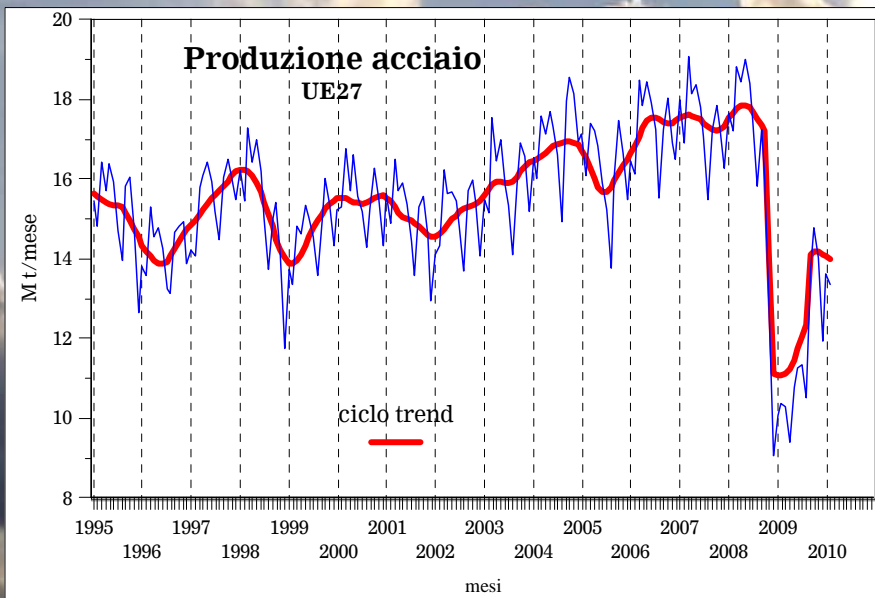














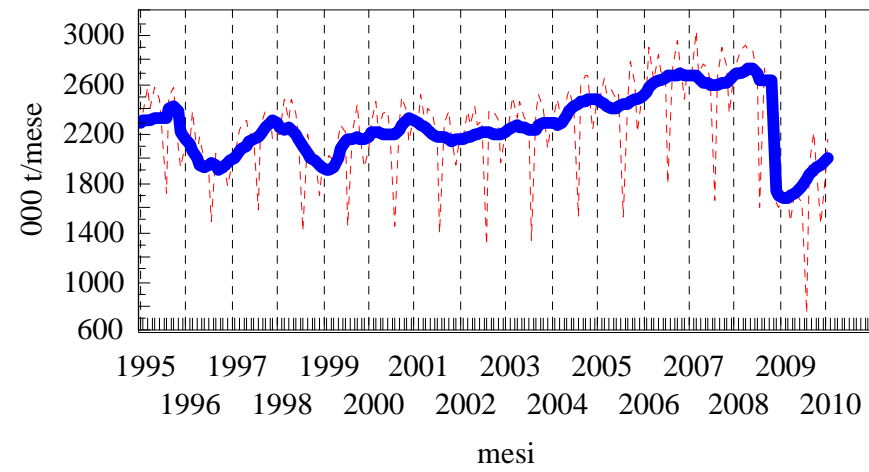
Italia



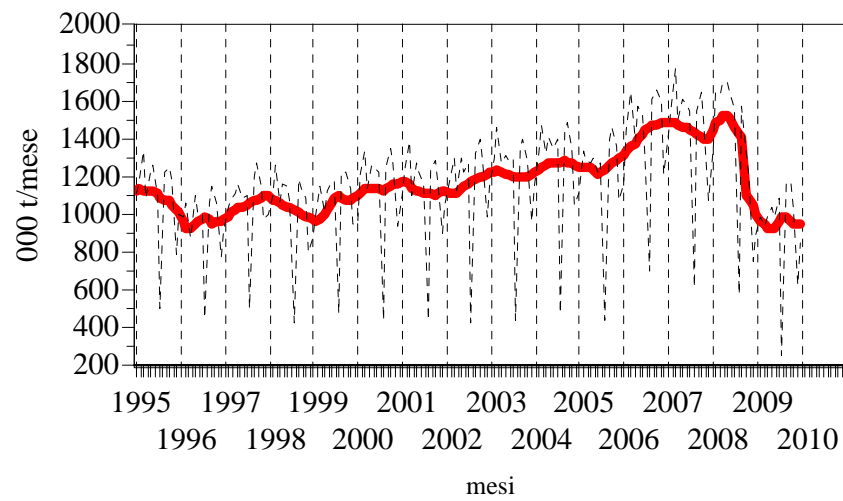
Federacciai

# Italia

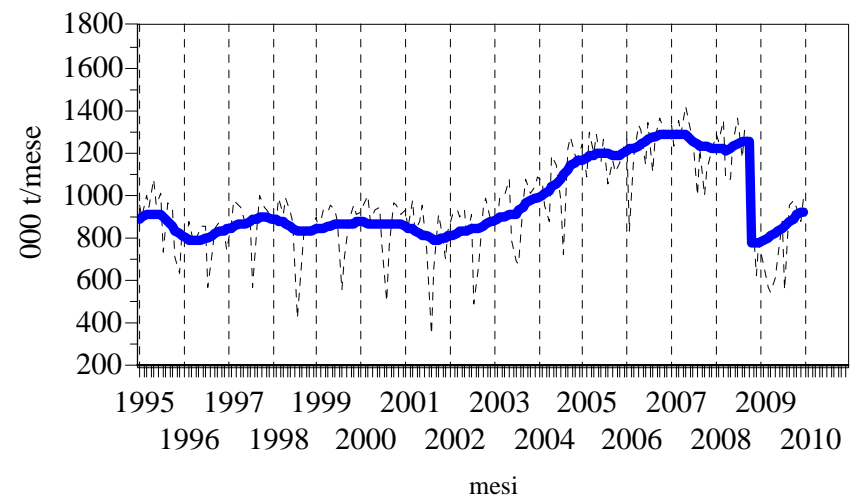
## Produzione di acciaio



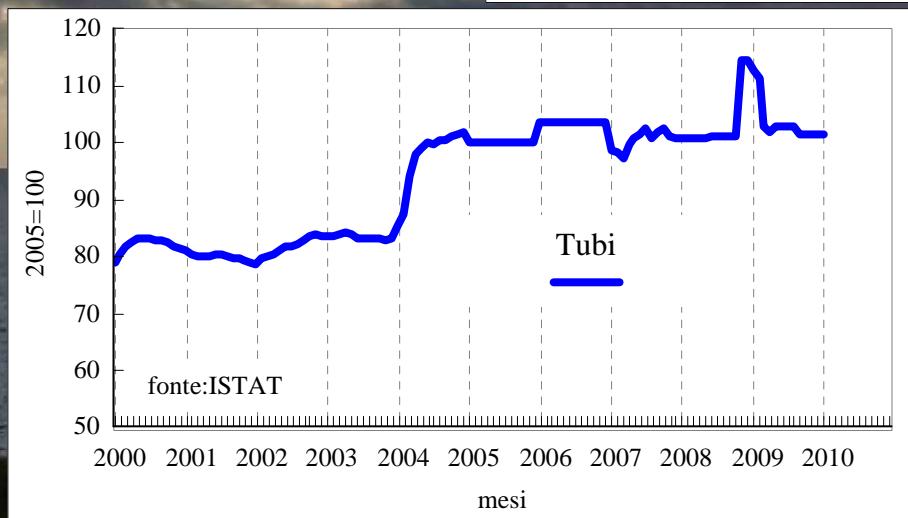
## Produzione di laminati lunghi



## Produzione di laminati piani



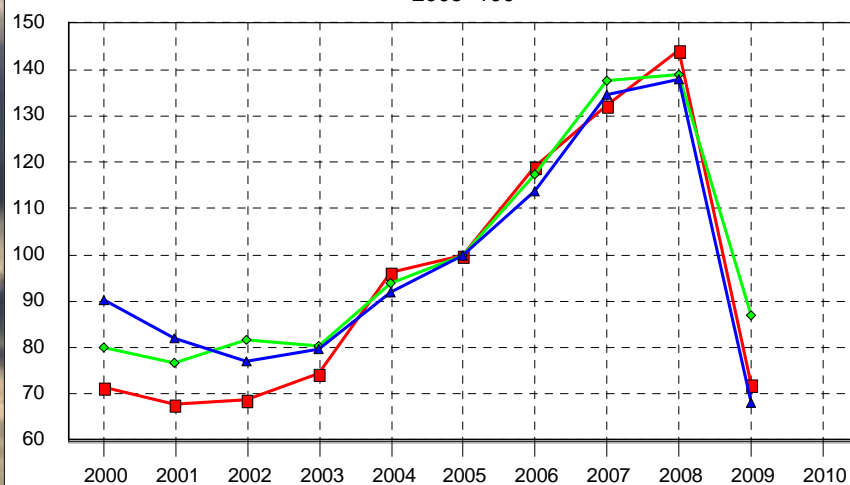




# Italia

## Indice del fatturato

2005=100

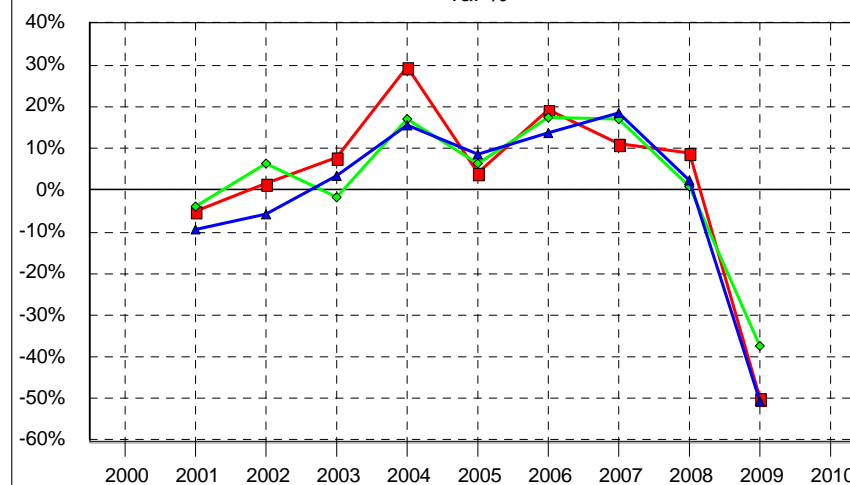


■ indice del fatturato totale/SIDERURGIA  
 ◆ indice del fatturato totale/ TUBI, CONDOTTI, PROFILATI CAVI E RELATIVI ACCESSORI IN ACCIAIO (ESCLUSI QUELLI IN ACCIAIO COLATO)  
 ▲ indice del fatturato totale/ ALTRI PRODOTTI DELLA PRIMA TRASFORMAZIONE DELL'ACCIAIO

fonte ISTAT

## Indice del fatturato

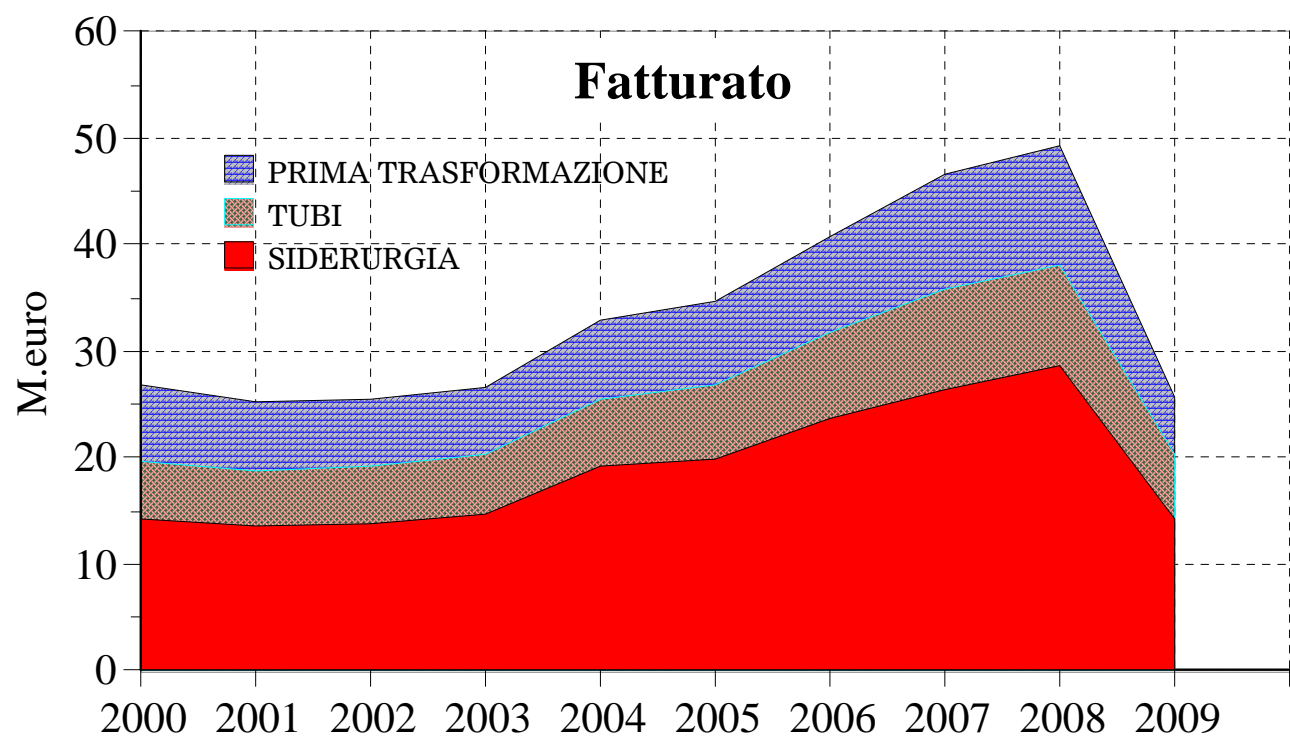
var %



■ indice del fatturato totale/SIDERURGIA  
 ◆ indice del fatturato totale/ TUBI, CONDOTTI, PROFILATI CAVI E RELATIVI ACCESSORI IN ACCIAIO (ESCLUSI QUELLI IN ACCIAIO COLATO)  
 ▲ indice del fatturato totale/ ALTRI PRODOTTI DELLA PRIMA TRASFORMAZIONE DELL'ACCIAIO

fonte ISTAT

Italia

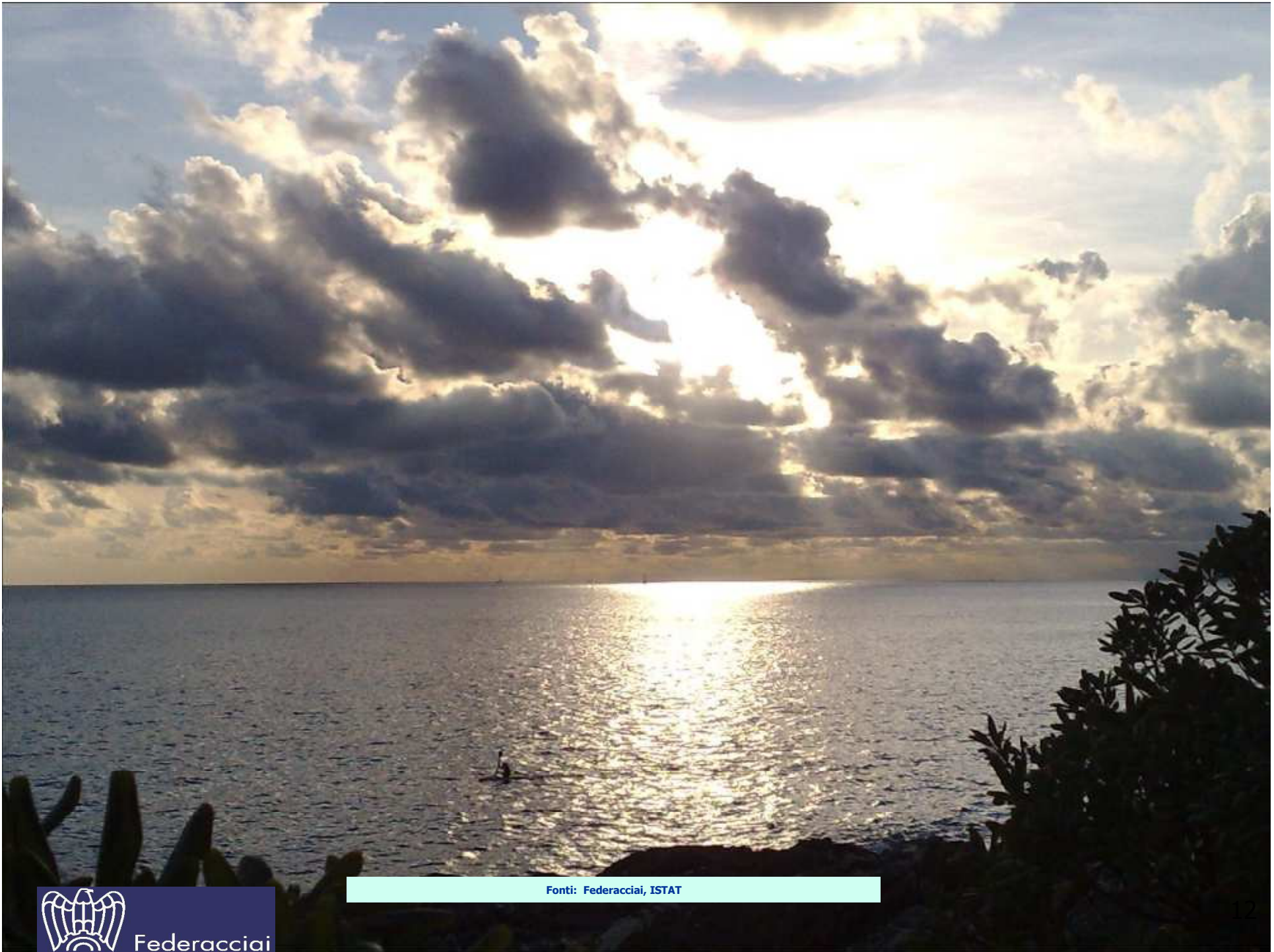


fonti: ISTAT 2005 Conti economici delle imprese 2005 altri anni elab. da indici del fatturato



Federacciai





Fonti: Federacciai, ISTAT



Federacciai